

## Section A

1. (a) Xylem transport Water & Mineral from roots to upper parts of plant.
- (b) Pulmonary artery carries deoxygenated blood from heart to lungs.

## Section B

5. All the cells in multicellular organisms may not be in direct contact with the surroundings environments. ~~of all the cells~~. Thus, simple diffusion will not meet the O<sub>2</sub> requirements of all the cells.

## Section C

- (a) HCl - It creates an acidic medium which facilitates the action of pepsin.  
Pepsin → It digest proteins into peptones  
Bile → Bile breaks down fat into fat globules.  
Trypsin → Trypsin digests protein
- (b) Gastric gland are present in the wall of the stomach

11. (a) Insulin Hormone is released by Pancreas <sup>endocrine</sup> gland.  
Function - It reduces sugar level in blood.

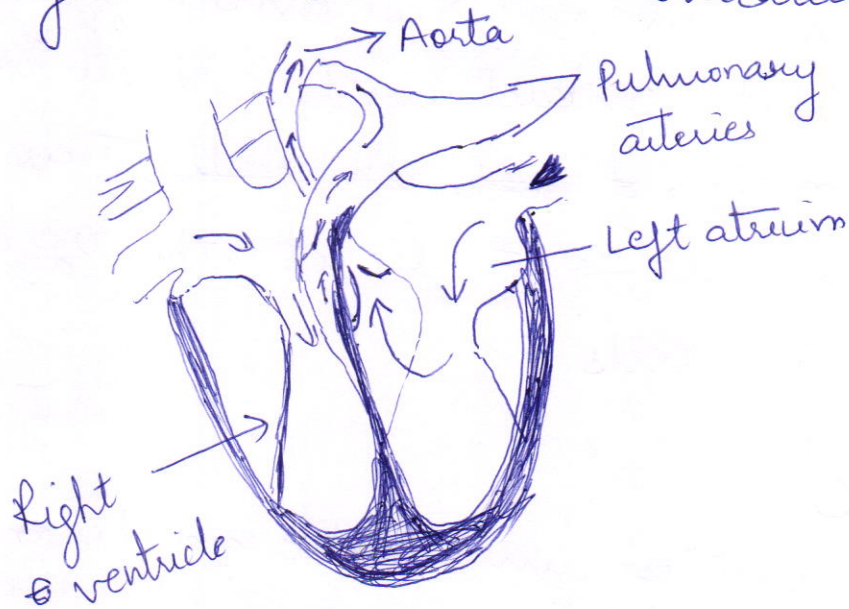
Enzymes → Pancreatic amylase → Neutralizes acidic food coming from stomach.

Trypsin - Digests proteins.

Lipase - Breaks down emulsified fats.

(b) The cells cannot continually create and transmit electrical impulses so multicellular organisms use another means of communication namely chemical communication.

12 (a)



(b) (i) As ventricle have to pump blood into various organs.  
(ii) Since the blood emerges from the heart under high pressure.